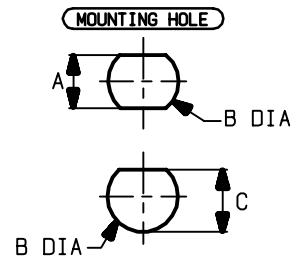
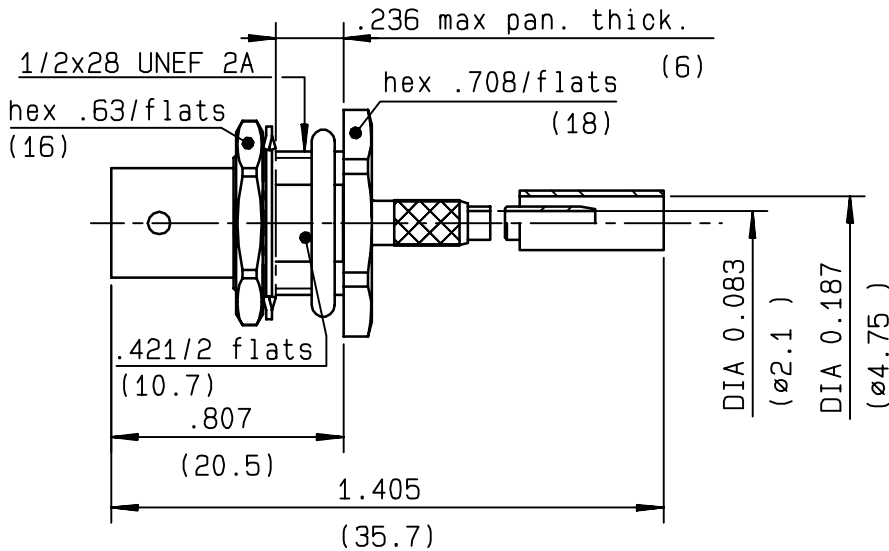


STRAIGHT BULKHEAD JACK PANEL SEAL
REAR MOUNT CRIMP TYPE - CABLE 3.6/75 D

R142.325.106
SERIES BNC 75



	MM		INCH	
	min	max	min	max
A	10.8	10.9	.425	.429
B	12.7	12.8	.5	.503
C	12	12.1	.472	.476

NOMINAL IMPEDANCE	75 Ω
FREQUENCY RANGE	0-1.5 GHz
TEMPERATURE RATING	-65/+165 °C
V.S.W.R	1.30 + 0 x F(GHz)Maxi
RF INSERTION LOSS	0.115 √F(GHz) dB Maxi
VOLTAGE RATING	500 Veff Maxi
DIELECTRIC WITHSTANDING VOLTAGE	1500 Veff Mini
INSULATION RESISTANCE	5000 MΩMini
HERMETIC SEAL	NA Atm.cm ³ /s
LEAKAGE (pressurized only)	NA
MECHANICAL DURABILITY	500 Cycles
WEIGHT	16.1 gr
SPECIFICATION	

CABLES : **BT3002**
POPE 46431
TZC 750 24

OTHERS CHARACTERISTICS

CABLE RETENTION	150	N Mini
CENTER CONTACT RETENTION		
Axial force - mating end	27	N Mini
Axial force - opposite end	27	N Mini
Torque	NA	cm.N Mini
RECOMMENDED TORQUES		
Mating	NA	cm.N
Panel nut	370	cm.N
Clamp nut	NA	cm.N

CONNECTOR PARTS: MATERIALS

BODY	BRASS
OUTER CONTACT	
CENTER CONTACT	BERYLLIUM COPPER
INSULATOR	PTFE
GASKET	SILICONE RUBBER
OTHERS PIECES	BRASS

FINISH (all values are given in micrometers)

SILVER 5 PASSIVATED OVER COPPER 0.5
SILVER 5 PASSIVATED OVER COPPER 0.5
-
-
SILVER 5 PASSIVATED OVER COPPER 0.5

K D A

ISSUE	CREATION DATE	FILE PART-NUMBER
9906C00	21/10/1994	94-0106-716

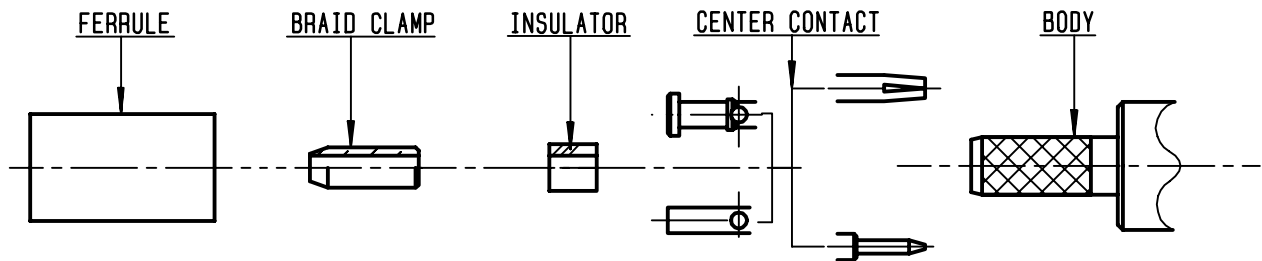


The information given here is subject to change without notice.
 Design changes may be in order to improve the product .



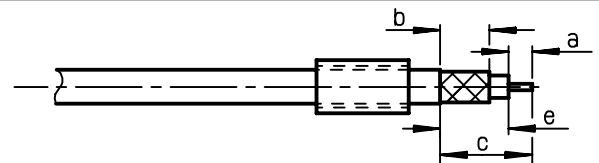
R142.325.106

ISSUE 9906C00 SERIES BNC 75



①

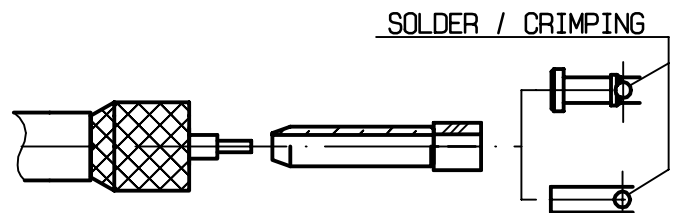
Slide ferrule onto cable .
Strip the cable .



Stripping	a	b	c	d	e
inch	0.157	0.394	0.728	0	0.571
mm	4	10	18.5		14.5

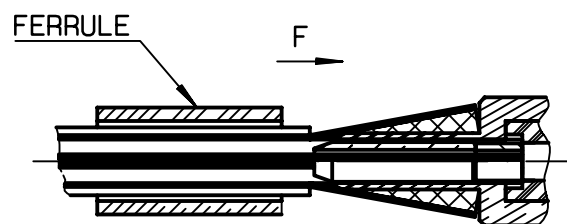
②

Fan the braid .
Slide the braid clamp and insulator between the dielectric and the braid .
Slide on centre contact until it bottoms against cable dielectric .
Solder or crimp centre contact .
Crimping tool : R282 223 000 (Hex. : .068)
or crimping tool R282 293 000 (M22520/5-01)
+ dies R282 235 011 (M22520/5-11)



③

Slide cable into body until bottoms against insulator .
Slide ferrule over the braid .
(In direction F)



④

Crimp the ferrule with crimping tool R 282 --- --- (Hex. : -----) or crimping tool R282 287 000
+ dies R282 265 002 (Hex. : 4.52)
Cut the excess of braid .

